



Porto 2

Acoustic Cork Wallcovering

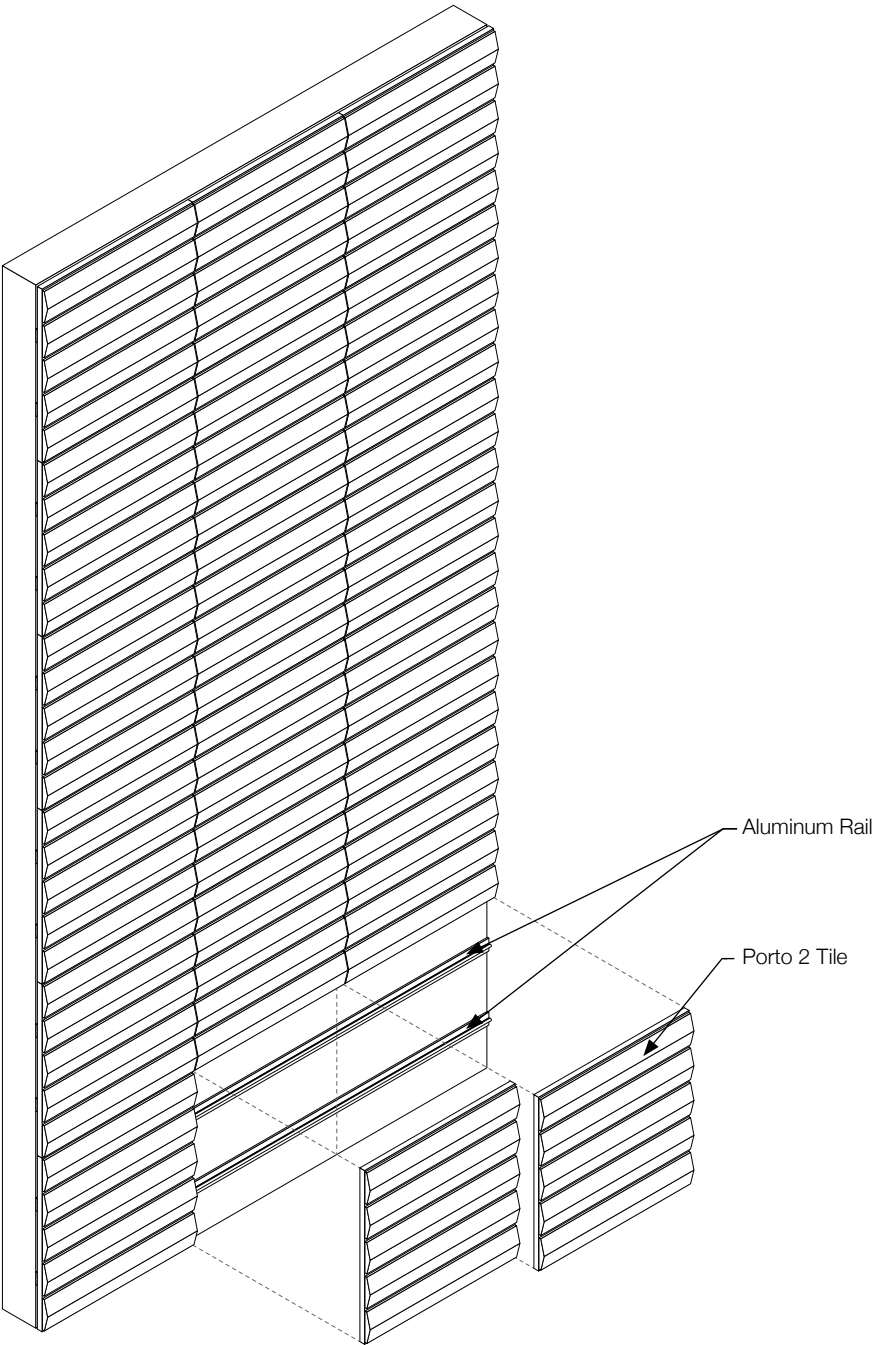
spinneybeck

About



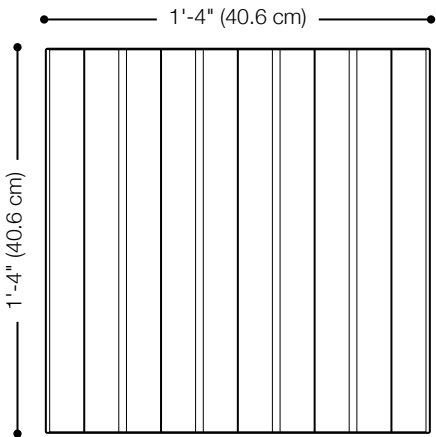
Porto 2 is an acoustically absorptive composite cork wall system composed of 1'-4" (40.6 cm) square tiles produced with waste material from wine stopper production. The resulting product is 93% recycled cork produced in a waste-free molding process. The tiles secure to the unique pressure fit rail system with a gentle push. Named after the Portuguese city known for its cork factories, the design of Porto 2 tiles is inspired by the familiar texture of corrugated metal siding on factory buildings. Tiles may be oriented horizontally or vertically to provide sound softening and pattern.

About

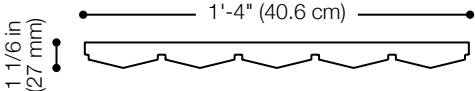


1 Exploded Axonometric
Scale: 1/2" = 1'-0"

Standard Size

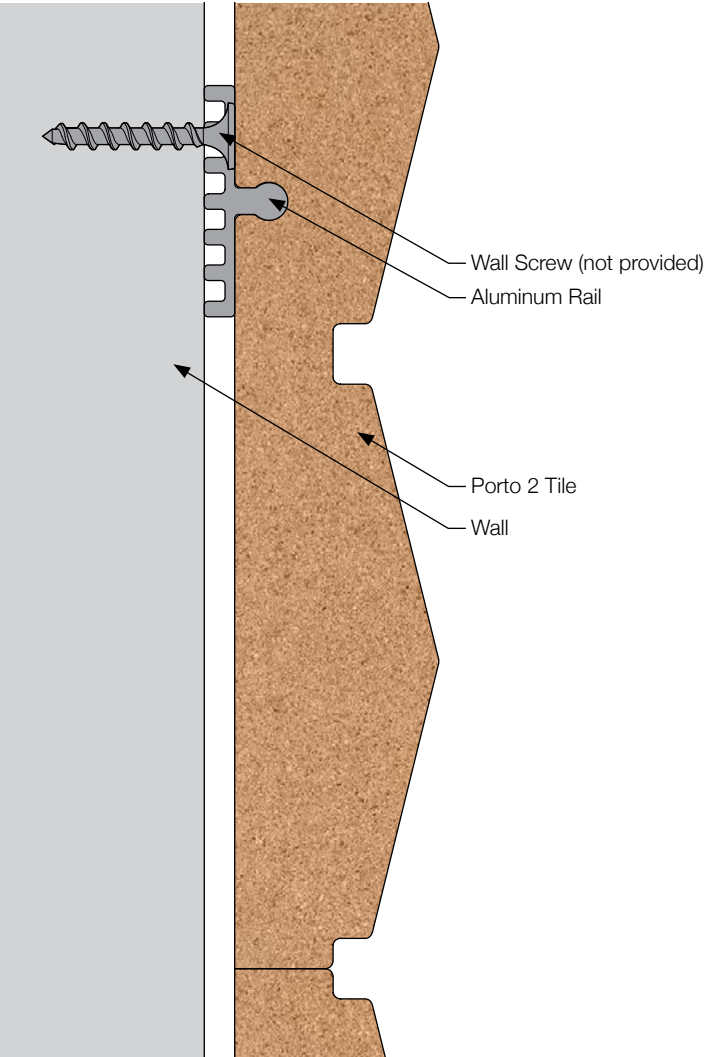


2 Elevation
Scale: 1 1/2" = 1'-0"

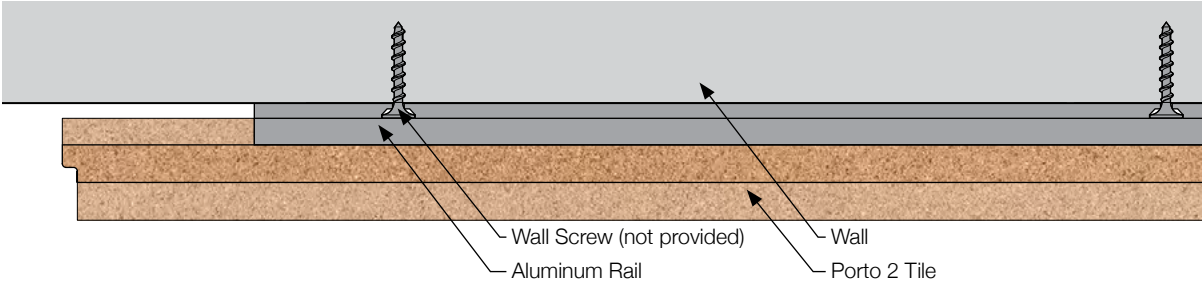


3 Plan
Scale: 1 1/2" = 1'-0"

About

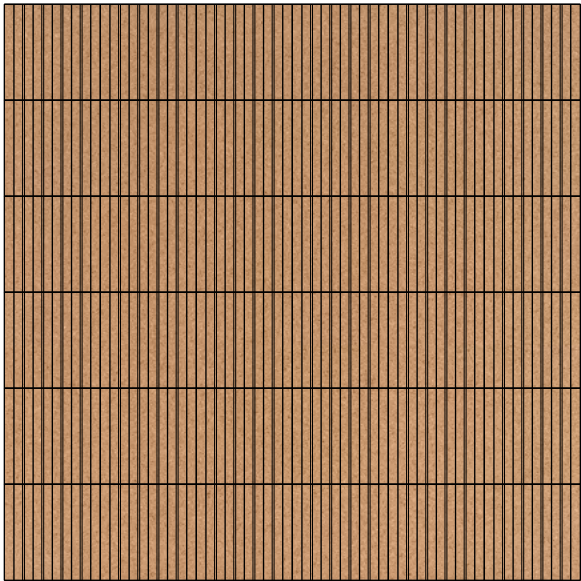


3 Section Detail
Scale: 1'-0" = 1'-0"

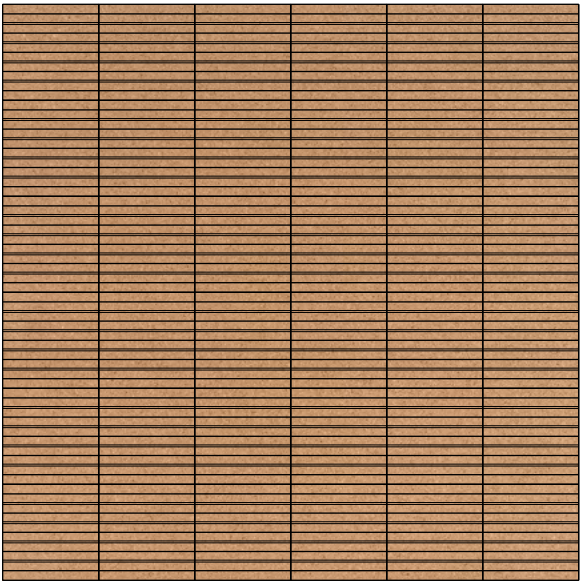


4 Plan Detail
Scale: 6" = 1'-0"

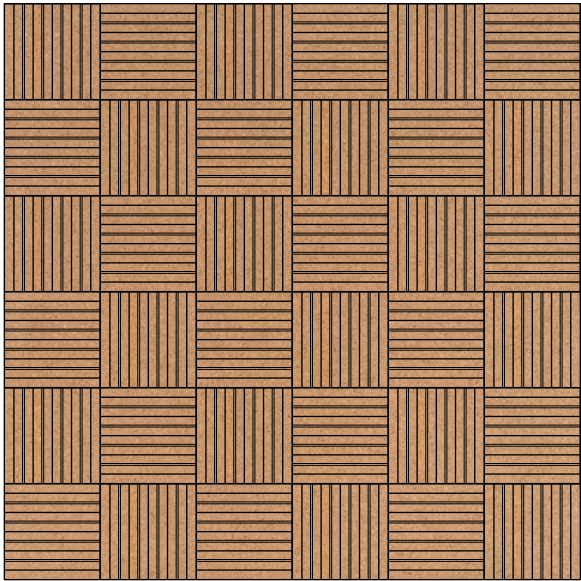
Suggested Configurations



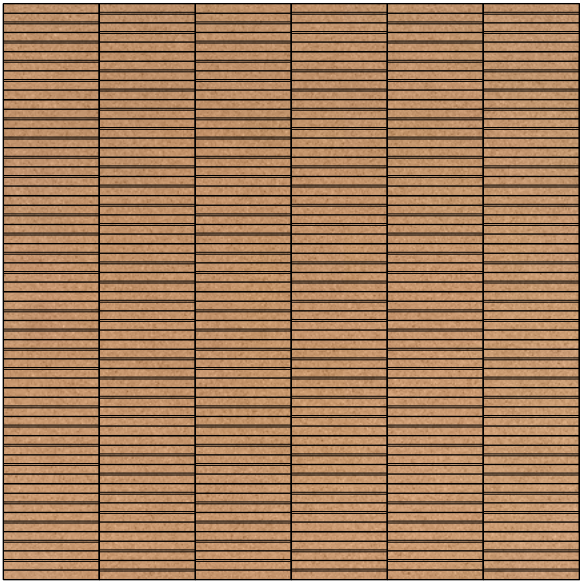
Porto 2 Pattern 1



Porto 2 Pattern 2



Porto 2 Pattern 3



Porto 2 Pattern 4

Specifications

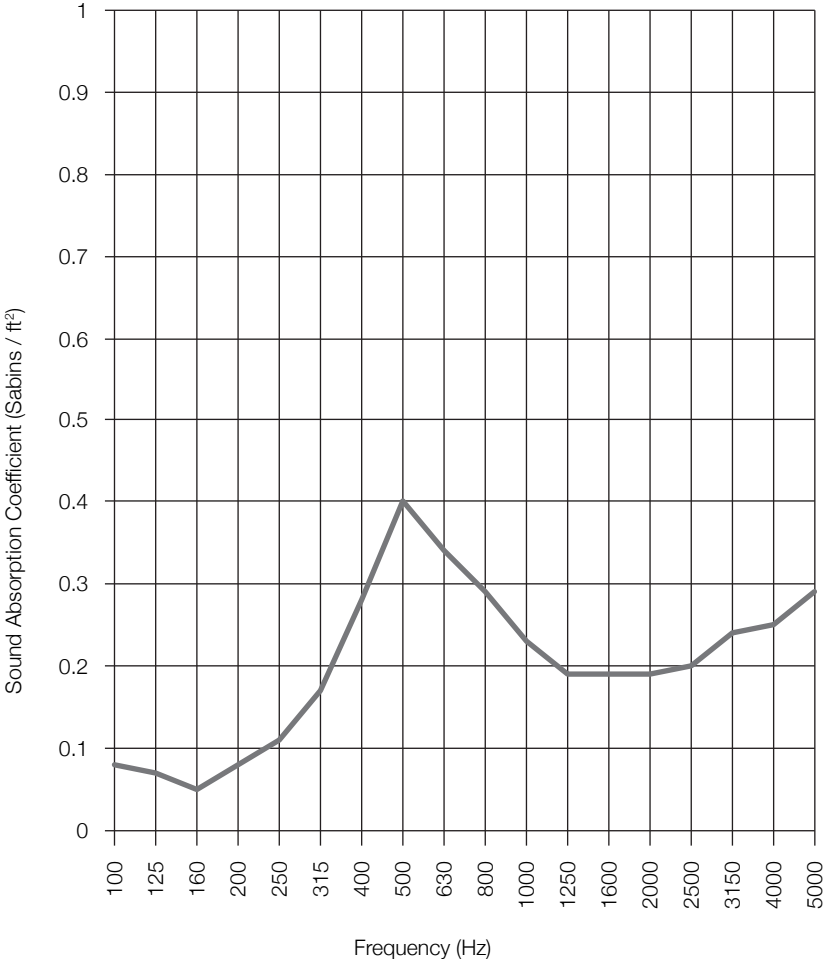
Name	Porto 2
Designer	Lars Beller Fjetland
Origin	Portugal
Content	93% Recycled Cork + 7% Resin
Tile Size	1'-4" x 1'-4" in (40.6 x 40.6 cm)
Tile Thickness	1 1/6 in (27 mm)
Weight	18 oz / ft ² (5492 g / m ²)
Standard Color	Natural Cork
Durability	Contract or residential
Maintenance	Dust regularly. Spot clean with cloth dampened with water only.
Environmental	Cork is the bark of the cork oak tree and is 100% natural plant tissue Cork is 100% biodegradable, formaldehyde free, and FSC Certified Cork contributes to LEED® MR Credit: Building Product Disclosure and Optimization – Sourcing of Raw Materials Porto 2 is 93% post-industrial recycled material and contributes to LEED® MR Credit 4.1-4.2
Design Tool	A Design Tool is available to assist in the design of Porto tiles. This tool allows patterns to be configured and is available at: dt.spinneybeck.com .
Installation	Patent pending pressure fit rails provided—Rails ship in segments of 6'-0" (1.8 m) and must be cut to length by installer. Refer to Porto Installation Instructions document for detailed instructions.
Variation	Cork is a natural material and minor changes in color are evidence of the 100% natural origin of the material
Acoustics	ASTM C 423: NRC – 0.25, SAA – 0.22
Colorfastness to Light	Class 2–3
Flammability	ASTM E 84: Class B

Acoustic

Sound Absorption Results

Frequency (Hz)	Sound Absorption Coefficient (Sabins / ft ²)
100	0.08
125	0.07
160	0.05
200	0.08
250	0.11
315	0.17
400	0.28
500	0.40
630	0.34
800	0.29
1000	0.23
1250	0.19
1600	0.19
2000	0.19
2500	0.20
3150	0.24
4000	0.25
5000	0.29

SAA = 0.22
 NRC = 0.25



Test Report Porto 2

For Porto 2, the test report quotes the frequency dependent sound absorption data as well as the single number ratings. Data taken from Test Report RAL™-A16-043 conducted by Riverbank Acoustical Laboratories. Complete test results are available upon request.